

St. Joseph's Topic Challenge - Year 5 Summer term 2

Our topics this half term are Rivers (Geography), 'Animals and Humans – Changes (Science) and Street art/Graffiti (Art). To compliment this topic, we ask that you choose from and complete tasks from the menu below.

The heat-ometer suggests the difficulty or challenge the tasks may offer. You should attempt at least one 'Extra Hot' task this half term.

Complete a minimum of 4 tasks from the take away menu and think about doing two that link Geography and then a further two linked to Science. Can you also fit in some Art too?

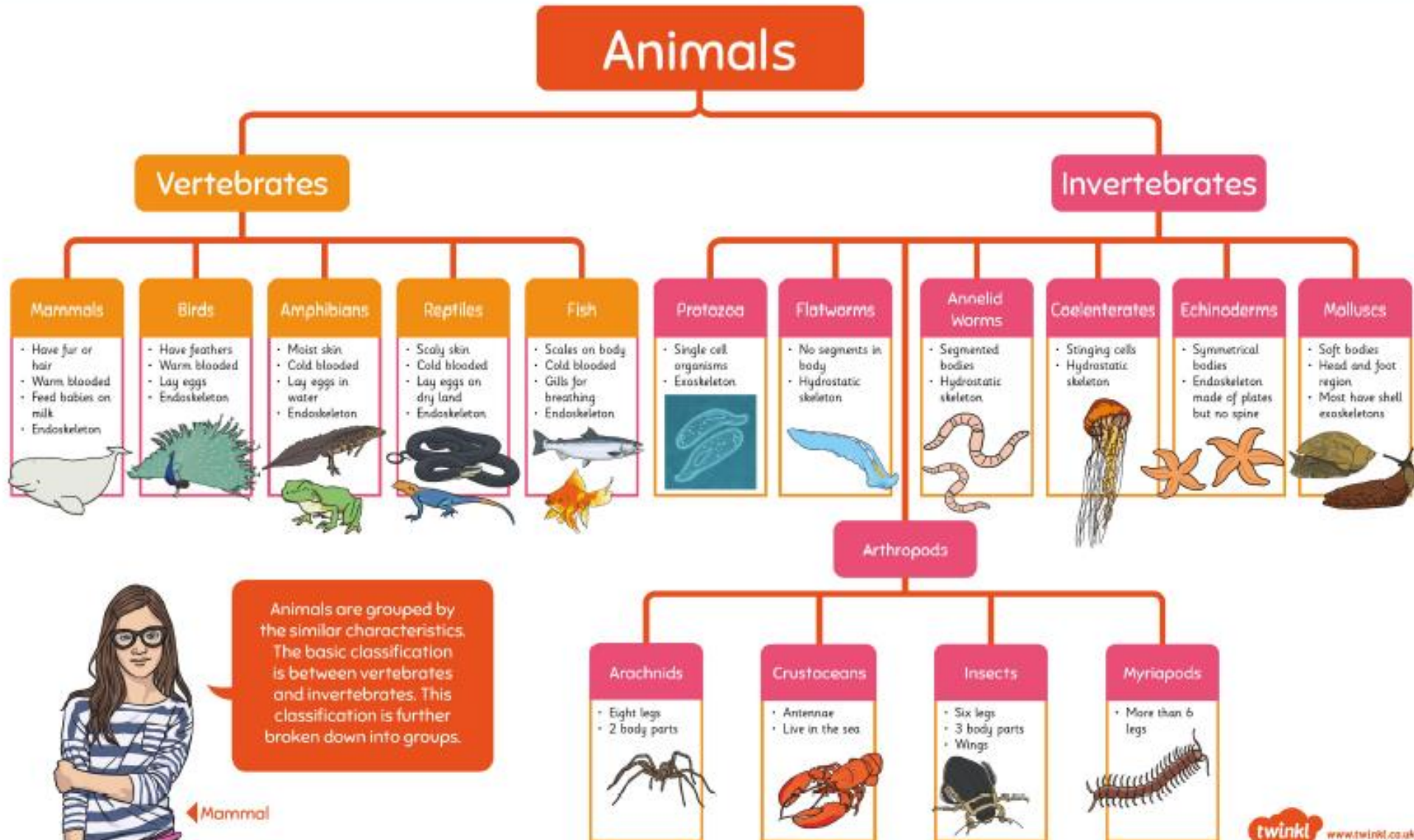
It would be brilliant if you could complete ALL of them during the whole half-term (7 weeks)!





<p style="text-align: center;"><u>Gestation periods</u></p> <p>Create a Gestation periods Booklet using the information poster below along with some of your own research.</p>	<p style="text-align: center;"><u>The life of a River</u></p> <p>Research and learn about the Life of a river: Rivers can be divided into three stages:</p> <ul style="list-style-type: none"> • Upper course • Middle Course • Lower Course <p>Some support below and at these websites:</p> <ul style="list-style-type: none"> • https://www.youtube.com/watch?v=_M48ANM35AQ • https://www.youtube.com/watch?v=fMmzY7XjEo 	<p style="text-align: center;"><u>Banksy</u></p> <p>Research Banksy. Find some examples of his art. For each piece write a short summary about:</p> <ul style="list-style-type: none"> • What is in the picture? • What is happening? • What is the main message?
<p style="text-align: center;"><u>Changes in Old Age</u></p> <p>Research and sort the Old-Age True/False Cards into piles or write them into a table to save you printing them.</p> <p>Create an information poster to show what you've learnt.</p>	<p style="text-align: center;"><u>How do we use rivers?</u></p> <p>Research how we use rivers. Talk about the positive and/or negative effects. e.g. Group – Fishermen How – for leisure/ catch fish to eat Positive – Fish populations controlled/Presence may prevent vandalism and damage Negative- May leave litter/Over-fishing of some species.</p>	<p style="text-align: center;"><u>Design a Graffiti Name Tag</u></p> <p>Create your own name tag in graffiti style text. DO NOT do this on any property please! Only on paper!</p>
<p style="text-align: center;"><u>Gestation periods:</u></p> <p>You will be comparing humans (who are mammals) to other types of animals who are vertebrates.</p> <p>Order the following animals by their gestation periods on a number line and draw a picture of them: Human, frog, goldfish, snake, whale, parrot, salmon, lizard.</p>	<p style="text-align: center;"><u>UK and World Rivers</u></p> <p>Using the sheets below, locate the rivers using an atlas or online maps. UK- Locate and name the source (where the rivers starts) and the mouth of the river (where it ends). World – as above but name the countries the river flows through and length in km</p>	<p style="text-align: center;"><u>Create artwork</u></p> <p>Have a go at creating your own artwork in the style of Keith Haring.</p> <p>Bold colours, cartoon people shapes, black outlines and some movement lines.</p>
<p style="text-align: center;"><u>Stages of human growth</u></p> <p>Demonstrate your knowledge and understanding of human growth and development. Create a timeline of: Fertilisation, foetus, baby, toddler, child, adolescence, early adulthood, middle adulthood, late adulthood/old age.</p>	<p>Watch these BBC clips and learn about the water cycle.</p> <ol style="list-style-type: none"> 1. https://www.bbc.co.uk/bitesize/clips/zh4rkqt 2. https://www.bbc.co.uk/bitesize/clips/z8qrfg8 3. https://www.bbc.co.uk/bitesize/topics/zkgg87h/articles/z3wpp39 <p>Draw a diagram to SHOW the water cycle.</p>	<p style="text-align: center;"><u>Keith Haring</u></p> <p>Research the artist Keith Haring and create a fact file/information page/booklet about him.</p>

Classification of Animal Types



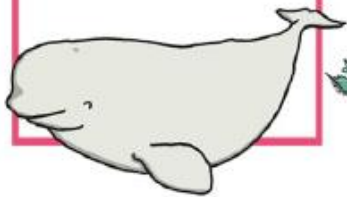
◀ Mammal

Animals are grouped by the similar characteristics. The basic classification is between vertebrates and invertebrates. This classification is further broken down into groups.

Vertebrates

Mammals

- Have fur or hair
- Warm blooded
- Feed babies on milk
- Endoskeleton



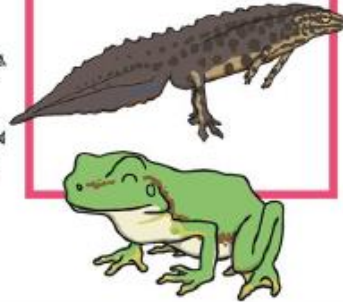
Birds

- Have feathers
- Warm blooded
- Lay eggs
- Endoskeleton



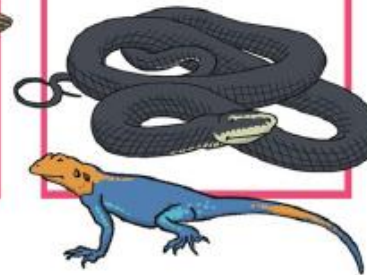
Amphibians

- Moist skin
- Cold blooded
- Lay eggs in water
- Endoskeleton



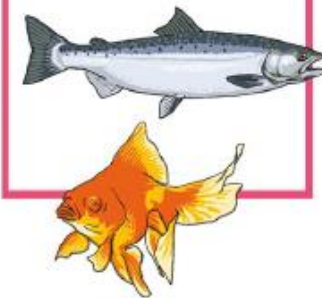
Reptiles









- Scaly skin
- Cold blooded
- Lay eggs on dry land
- Endoskeleton



Fish

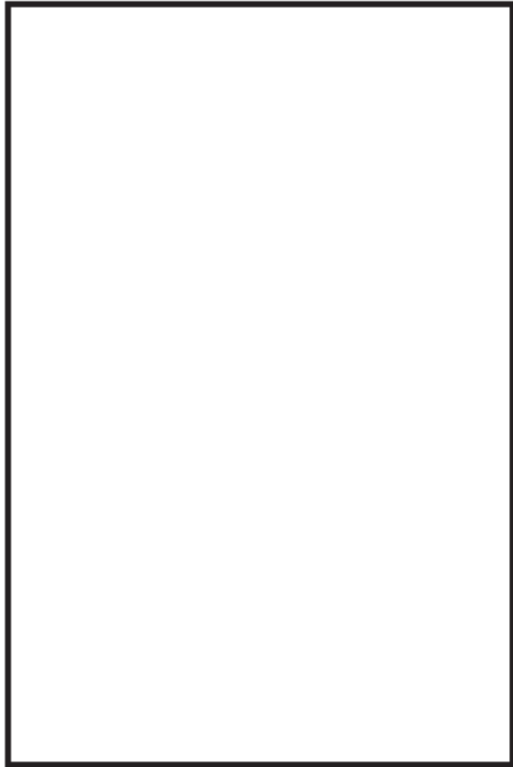
- Scales on body
- Cold blooded
- Gills for breathing
- Endoskeleton



Animal	Gestation Period
human 	9 months
lizard 	3 – 4 months
salmon 	40 days
snake 	2 – 3 months
parrot 	3 – 4 weeks
frog 	1 week
whale 	12 – 16 months
goldfish 	2 – 7 days

Example of a booklet

Gestation Periods Information Booklet



By _____

What does 'gestation' mean?

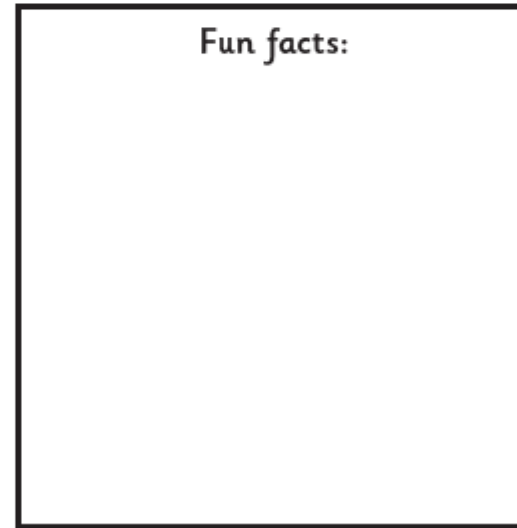


Did you know?



Do animals have different
gestation periods?

Fun facts:



Old Age True/False Cards:



All older people start to become senile (suffer memory loss).



Older people need a different diet to stay healthy.



If you look after your teeth properly you won't lose them all when you are old.



In old age, it is normal to be sick.



Older people need to exercise.



Older people can learn new skills.



The changes people go through as they get old are different for each person.



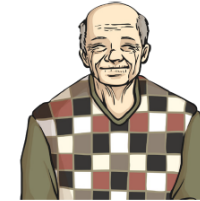
There is nothing you can do when you are younger to be healthier when you are older.



Older people can't look after themselves.



All older people need help to walk.

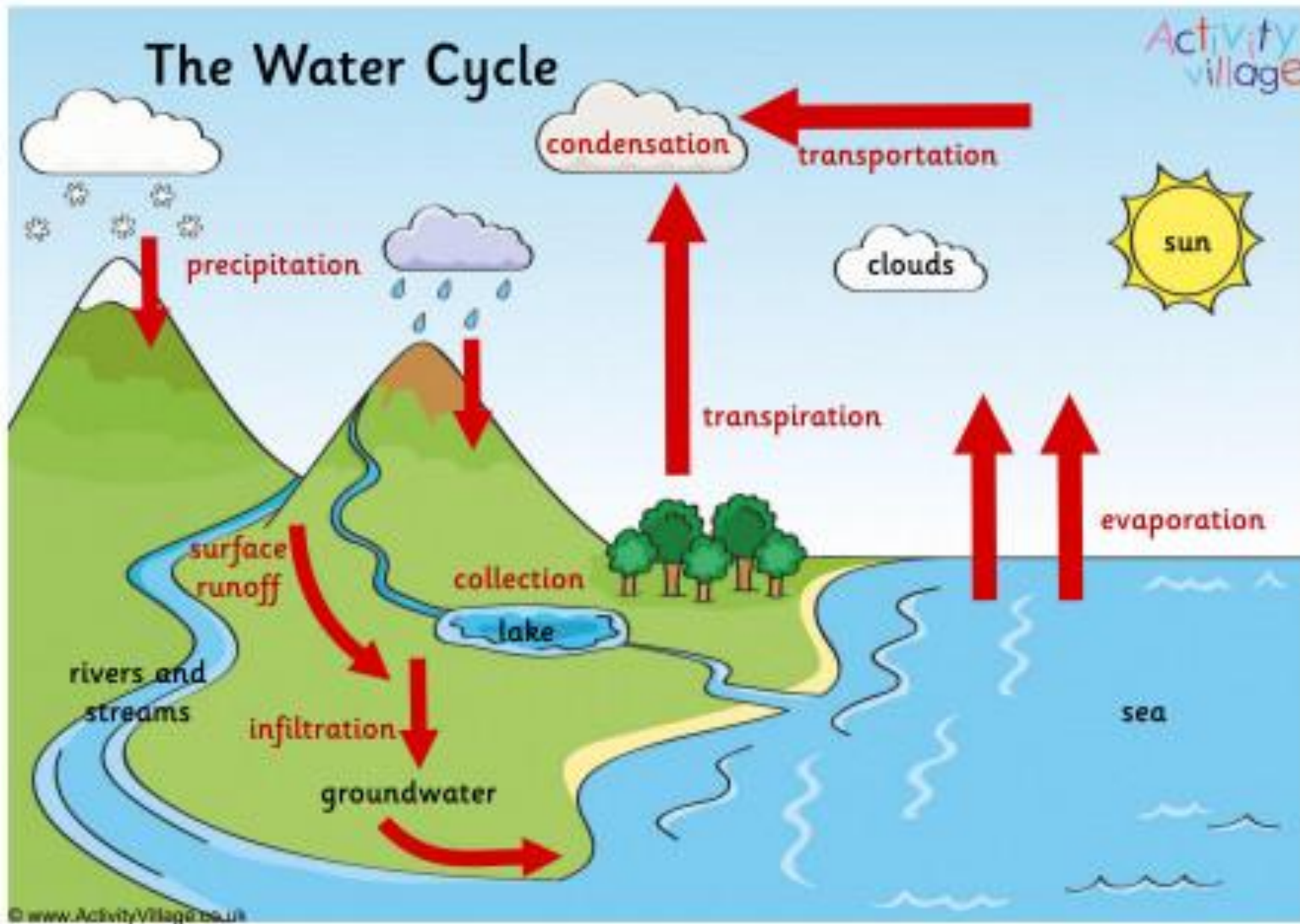


Humans start to age at 60.



Old age is the final stage of development for humans.

Geography support



UK Rivers



For each river, identify the area of land in which its source is located and the location of its mouth. The map below may help you to locate the river's course in your atlas.



River Name	Source	Mouth
Spey		
Bann		
Trent		
Mersey		
Thames		
Severn		
Conwy		
Tyne		
Clyde		
Tweed		



World Rivers

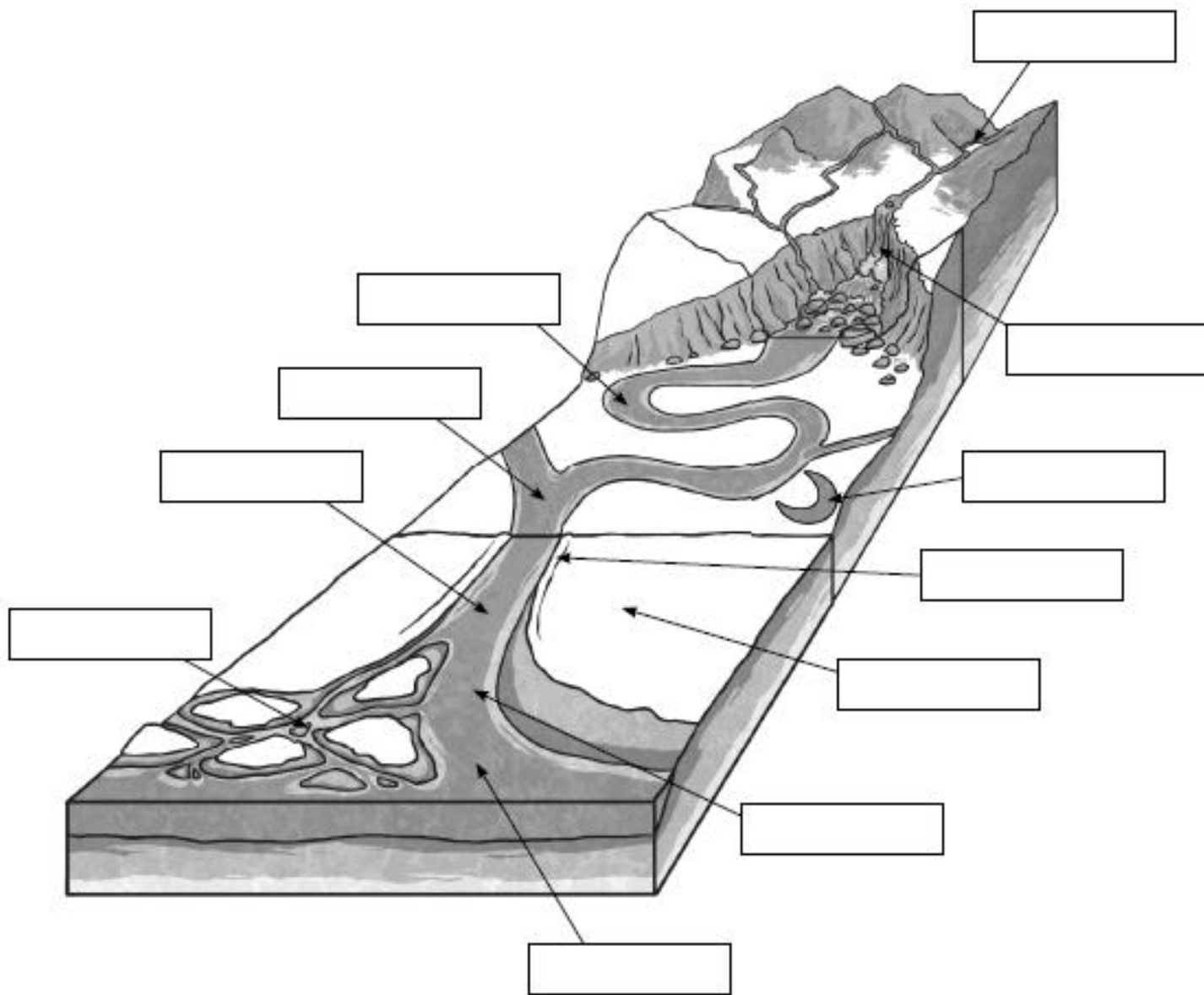
River	Source	Mouth	Countries on its course	Length (km)
Amazon				
Congo				
Ganges				
Indus				
Loire				
Mississippi				
Murray				
Nile				
Ob				
Yangtze				

Uses of a river

Group	How they use the river	Positive effects	Negative effects
Fishermen			
Factory owners			
Power generation companies			
Tourists			
Water sports groups			

The Life of a River

Use the labels at the side of the page to identify each of the parts of the river system.



channel	confluence
meander	mouth

delta	estuary
oxbow lake	source

floodplain	levee
waterfall	

Upper Course

Middle Course

Lower Course

Valley

valley

valley

channel

channel

channel

waterfall

tributary

floodplain

rapids

confluence

levee

gorge

meander

delta

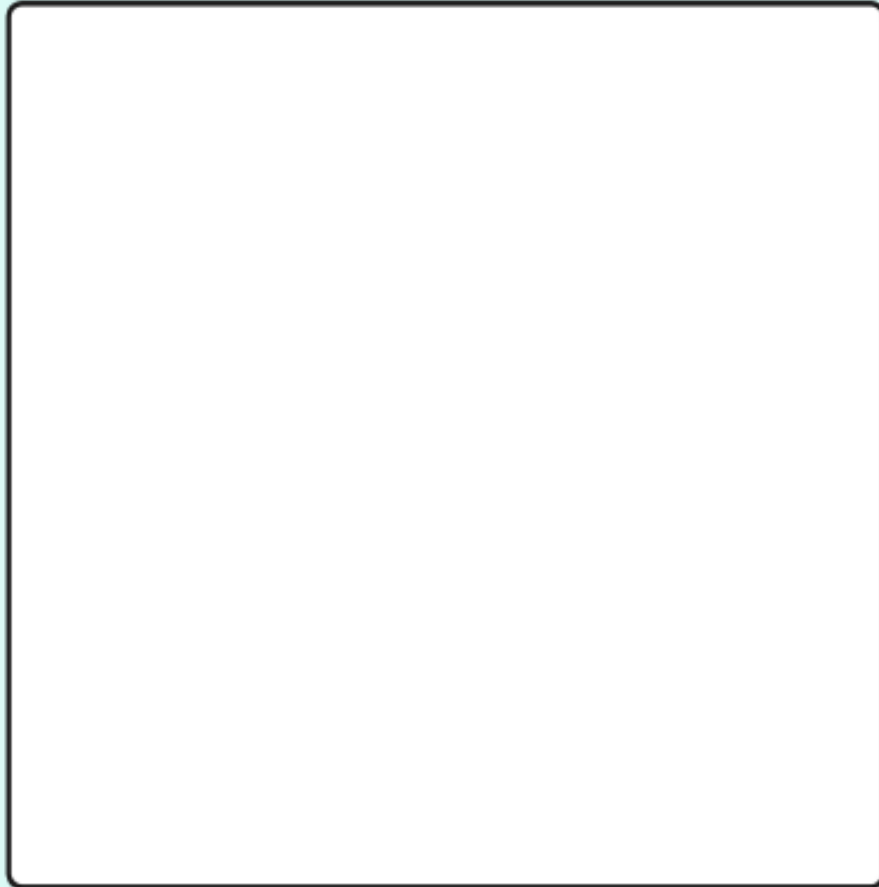
tributary

estuary

confluence

Art support – fact file example

Artist Fact File



Born: _____

Died: _____

Mediums used: _____

Style: _____

Most famous piece/s: _____

Other interesting facts: _____

Graffiti Tag

- A Graffiti Tag is your name or nickname usually drawn or sprayed on your work in a unique Graffiti style text.

